

Salines car park

An overview and key figures

On 9 February 2024, the Prince's Government unveiled its 'Mobility Plan', proposing practical, financially viable and effective measures to ease the flow of urban and inter-urban road traffic.

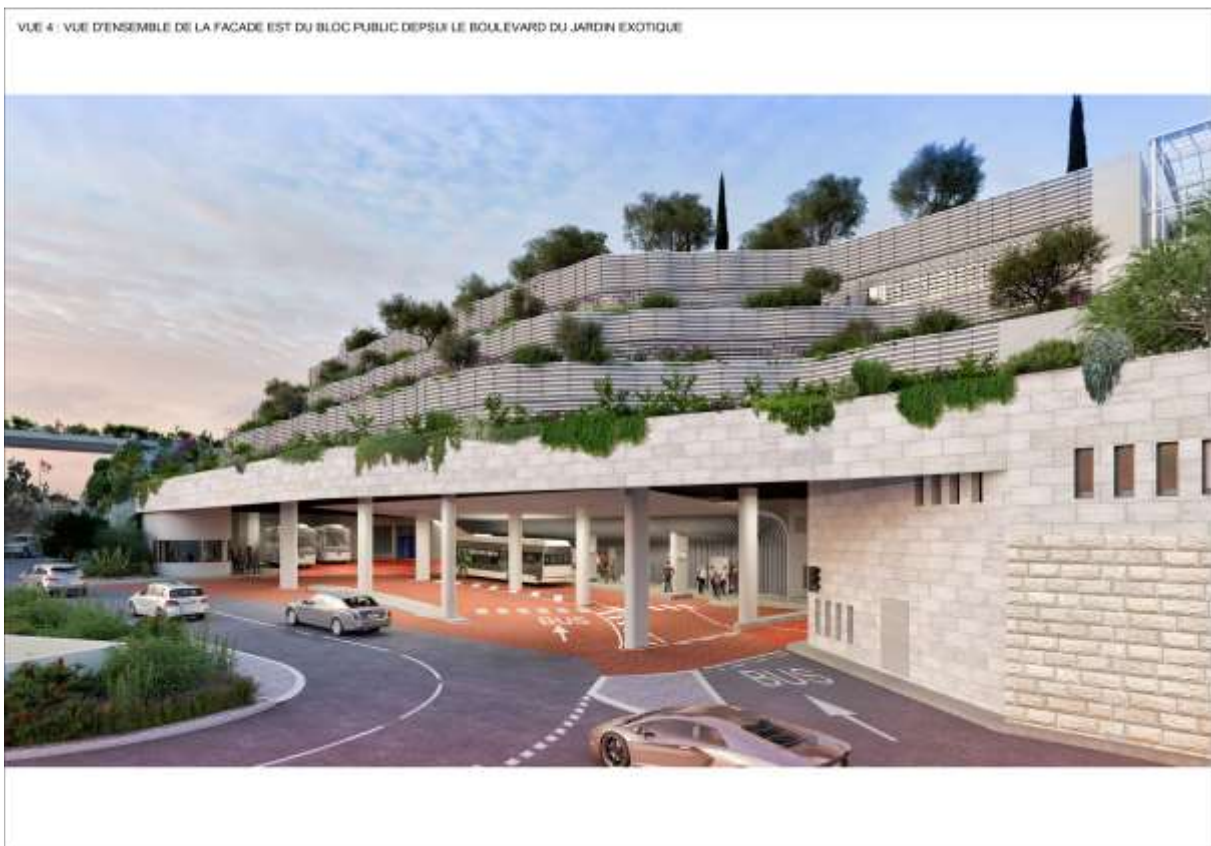
Park-and-ride facilities at the entrance to the city are one of the proposed measures to achieve the demanding goal of reaching carbon neutrality by 2050 while also improving the quality of life in the Principality.

Through the Salines car park, and by providing quality infrastructure that is easy to access, has plenty of parking spaces, offers multiple public transport options to reach the various districts of the Principality and has an affordable pricing policy, the Government of Monaco is urging motorists to switch to soft mobility, which is not only environmentally friendly but also in line with the Principality's desired quality of life.

Key figures...

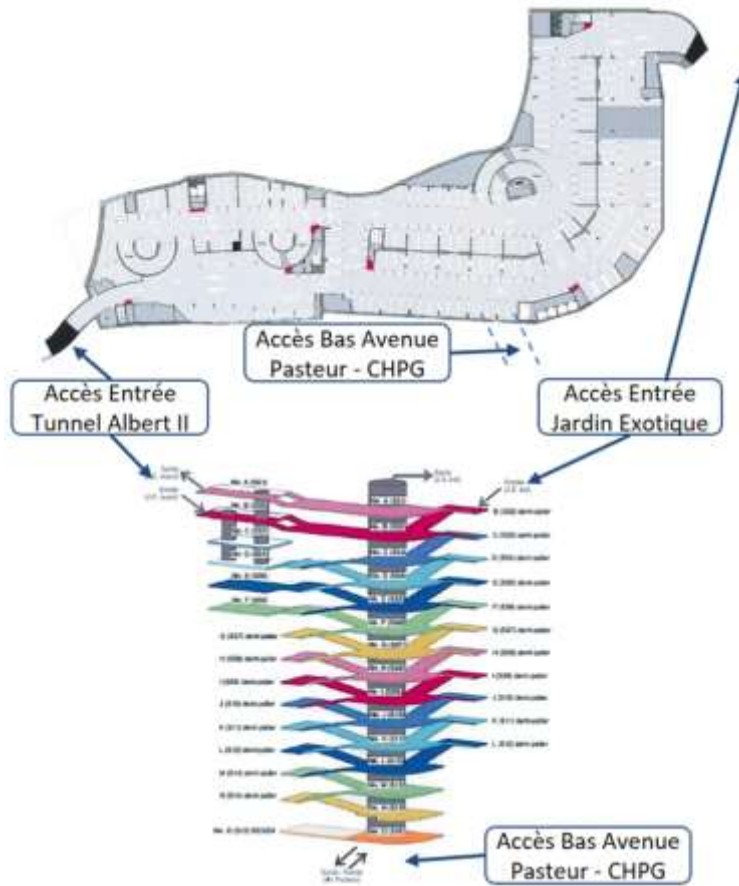
1) Investing in mobility

- **7 years** of construction, from 2017 to 2024
- **€208 million** investment for the 'mobility' part of the project
- **€567,000** per year in operating costs for the express shuttles
- **4,040** light vehicle movements could potentially be eliminated on working days thanks to this new car park at the entrance to the city



2) Infrastructure

- **1,790** parking spaces for light vehicles over **15 levels**, including:
 - **33** spaces for people with reduced mobility
 - **100** Monaco ON electric recharging points for light vehicles
 - **5** Mobeer spaces
 - Around **100** parking spaces for residents
- **100** motorbike spaces, including **15** electric ones
- **Vehicle access:**
 - One entrance and one exit at Boulevard du Jardin Exotique
 - An entrance from Moyenne Corniche, at the entrance to the Albert II Tunnel
 - An exit via a slip road just after the Exotique, in the direction of Nice
 - One entrance and one exit at Boulevard de Belgique and Avenue Pasteur
- **Two options for traffic flow within the car park:**
 - Travel from floor to floor, to find a parking space.
 - A double spiral ramp system to reach the entrance or exit quickly, without having to go through all 15 floors.
- **Pedestrian access:**
 - 3 pedestrian exits from the top (at the Exotique building and on either side of the control system at the bus stops)
 - Exit at the bottom, via the Galerie des Salines
- **A washing area** with water recycling
- **A bus station**
 - **20** coach parking spaces, including **12** spaces for overnight storage of urban public transport buses with electric recharging.
 - Daytime parking and control of touring coaches
- **Two bicycle stations:** one at -1, from the Exotic Garden, and one at -15, at the Princess Grace Hospital.



Current level



Level -15 with washing area and Monabike station



3) Soft mobility

- **Public transport**

- Two 'express' shuttle buses, with few or no stops, to serve the Monte-Carlo and Condamine districts.

→ *Hours from 7am to 7pm, Monday to Friday, running every 10 minutes.*

- The current line 2 (Jardin Exotique <> Monaco Ville) will have an extended timetable with a departure from 6am instead of 7am, every 15 minutes, then from 7am, every 10 minutes.

→ *In total, there will be a bus every 5 minutes during rush hour.*

- **The Galerie des Salines**

- A modern pedestrian walkway decorated with artwork by Roger Capron, accessible from level -15 of the car park, will provide access to Avenue Pasteur, leading to the Monaco cemetery or the new Princess Grace Hospital, via a lift in another part of the tunnel.

- In the summer of 2024, the 'Wurtemberg' footbridge will be opened, providing a direct link to Avenue de Fontvieille.

- In 2025, it will be extended by the Fontvieille footbridge, which will link the new Ilot Pasteur district.

→ *Travel time to Fontvieille from the Exotic Garden via the Galerie des Salines and footbridges will be around 10 minutes.*

- **Monabike**

- The two bicycle stations located at -1 and -15 of the Salines car park provide a total of 63 bike docks.

ARRETS ET ITINERAIRE LIGNE X1



ARRETS ET ITINERAIRE LIGNE X2



Direction de la Communication
10 bis, Quai Antoine 1er - BP 458
Tel : (+377) 98 98 22 22
presse@gouv.mc
www.gouv.mc

 **Gouvernement Princier**
PRINCIPAUTÉ DE MONACO

MONACO INFO

www.monacoinfo.com



4) Pricing policy

- **Discounted season tickets:** 300h/month for €51 (50% less than other car parks) and a free CAM season ticket.
- **Affordable daily parking rates:** a unique tariff based on time slots, i.e., €7.50 for a half-day and €11 for a full day.
- **Discouraging short stays:** a 15-minute charge, as opposed to the hourly charge in force in other public car parks
- **Encouraging a modal shift:** 10 free CAM trips upon presentation of a car park ticket from Les Salines bus stop, allowing a car with 5 passengers to make a return trip to the city centre on the express shuttles or line 2.
- **A solution for pending season ticket requests:**
 - **450** residential season tickets pending for parking lots in the Jardin Exotique district
 - **1,800** commuter season tickets: 1,200 transfers and 600 newly acquired.
 - **180** season ticket holders among Princess Grace Hospital staff

